

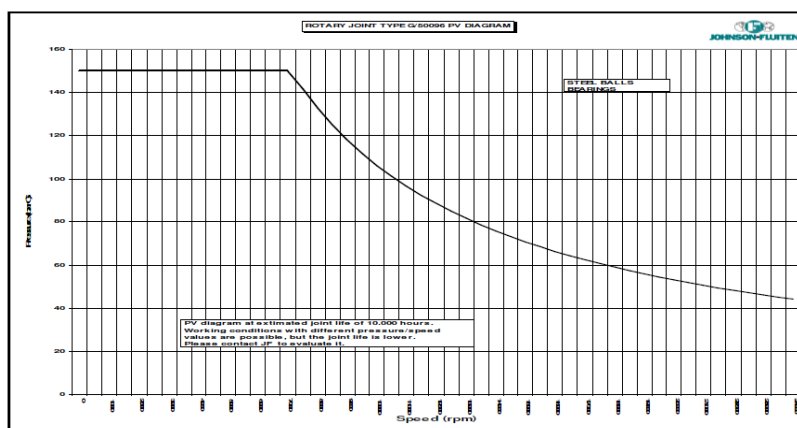
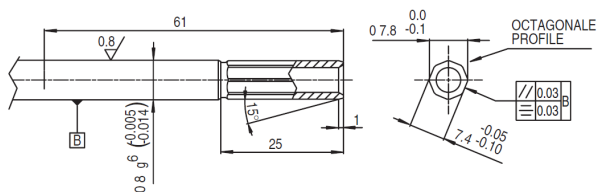
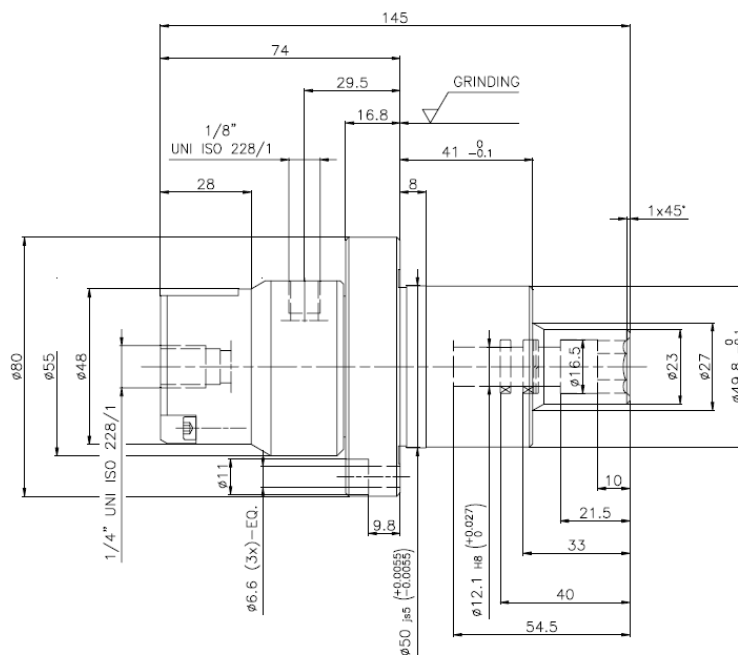
G/50146/0000



Custom-designed rotary union for high performance applications



Working conditions		
	coolant	Air
Pressure (bar)	150	5
Temperature	90	90
Speed (rpm)	32.000	10.000



Features and Benefits

- Special seal design permits dry running
- Labyrinth seal and drain holes protect bearings
- Optimised seal balance ratio
- High precision angular contact bearings for high speeds
- Anodised aluminium body
- Full flow area, minimal pressure drop

- Long drawbar stroke for maximum flexibility
- Low heat generation in bearings and mechanical seal
- No leakage during tool change commutation
- Large drain holes to evacuate coolant from the union
- Supplied with bearings run-in upon request

For any further information about this union, please contact us:

JOHNSON-FLUITEN S.r.l.

Via Newton 21 20016 Pero (Milano) Italia

Tel. +39.023394091 - email: info-jf@johnson-fluiten.com - www.johnson-fluiten.com



JOHNSON-FLUITEN