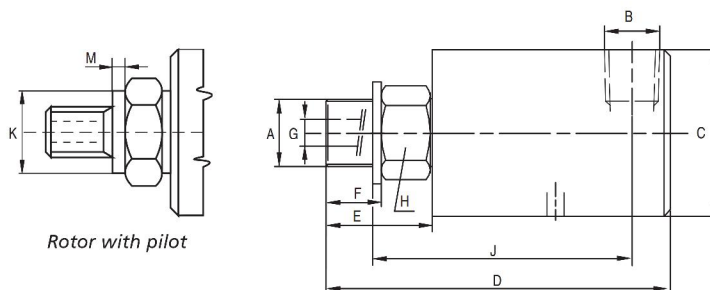


GA

GA



Rotor with pilot

Type	A	B	C	D	E	F	G	H	J	K	M	Weight (Kg)
GA003002503	M10 X 1 RH	1/8" NPT	31	72	22	11	3,2	17	54	-	-	0,15
GA003002505	M10 X 1 RH	1/8" NPT	31	72	22	11	3,2	17	54	11 ⁰ _{-0,011}	3	0,15
GA003002504	G 1/4" (BSP) RH	1/8" NPT	31	72	22	13	3,2	17	52	-	-	0,15
GA006015830	1/4" NPT RH	1/4" NPT	39	82	26	17	6,5	22	58	-	-	0,5
GA006000594	5/8" - 18 UNF RH	1/4" NPT	39	81	25	16	6,5	22	58	-	-	0,5
GA006003592	5/8" - 18 UNF LH	1/4" NPT	39	81	25	16	6,5	22	58	-	-	0,5
GA006002506	G 1/4" (BSP) RH	1/4" NPT	39	81	25	13	6,5	22	61	-	-	0,5
GA006002507	G 1/4" (BSP) LH	1/4" NPT	39	81	25	13	6,5	22	61	-	-	0,5
GA009015831	3/8" NPT RH	3/8" NPT	44	101	27	17	8,5	22	72,5	-	-	0,5
GA009002510	5/8" - 18 UNF RH	3/8" NPT	44	100	26	16	8,5	22	72,5	-	-	0,5
GA009003594	5/8" - 18 UNF LH	3/8" NPT	44	100	26	16	8,5	22	72,5	-	-	0,5
GA009000601	G 3/8" (BSP) RH	3/8" NPT	44	100	26	16	8,5	22	72,5	-	-	0,5
GA009003593	G 3/8" (BSP) LH	3/8" NPT	44	100	26	16	8,5	22	72,5	-	-	0,5
GA009001590	M16 X 2 RH	3/8" NPT	44	100	26	16	8,5	22	72,5	-	-	0,5
GA012015832	1/2" NPT RH	1/2" NPT	59	118	37	22	13	36	86	-	-	0,7
GA012001248	3/4" - 16 UNF RH	1/2" NPT	59	115	34	19	13	36	86	-	-	0,7
GA012003596	3/4" - 16 UNF LH	1/2" NPT	59	115	34	19	13	36	86	-	-	0,7
GA012002217	G 1/2" (BSP) RH	1/2" NPT	59	115	34	19	13	36	86	-	-	0,7
GA012003597	G 1/2" (BSP) LH	1/2" NPT	59	115	34	19	13	36	86	-	-	0,7
GA012002316	G 3/4" (BSP) RH	1/2" NPT	59	115	34	19	13	36	86	-	-	0,7
GA012003598	G 3/4" (BSP) LH	1/2" NPT	59	115	34	19	13	36	86	-	-	0,7
GA012003595	M20 X 1,5 RH	1/2" NPT	59	115	34	19	13	36	86	22 ^{-0,007} _{-0,020}	5	0,7
GA012003599	M20 X 1,5 LH	1/2" NPT	59	115	34	19	13	36	86	22 ^{-0,007} _{-0,020}	5	0,7
GA012002431	M22 X 1,5 RH	1/2" NPT	59	115	34	19	13	36	86	27 ^{-0,007} _{-0,020}	3	0,7
GA012003600	M22 X 1,5 LH	1/2" NPT	59	115	34	19	13	36	86	27 ^{-0,007} _{-0,020}	3	0,7

Consult factory for additional thread type.

Fluid	Pressure (BAR)	Temperature (°C)	RPM	RPM (with pilot)
Air	10	120	1.500	1.500
Coolant	70	120	3.500	6.000
Hydraulic Oil	105	120	3.500	6.000

Features and Benefits

- ▶ Precision ball bearings lubricated for life
- ▶ Hardened stainless steel rotor
- ▶ Optimised seal balance ratio for minimal friction
- ▶ Smooth running, no vibration
- ▶ Body available in anodised aluminium or brass
- ▶ Stationary seal face available in carbon graphite, bronze seal face for hydraulic oil above 70 bar