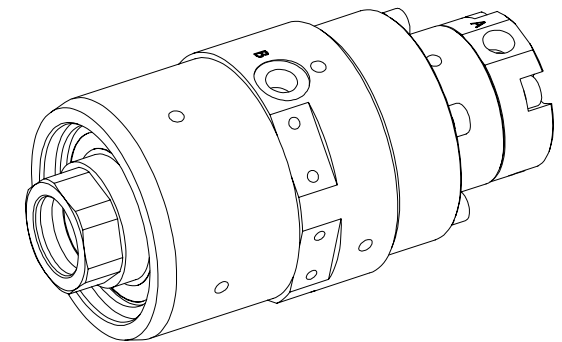
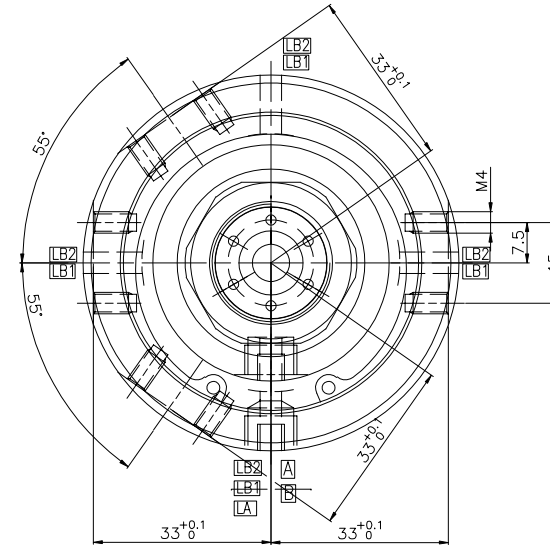
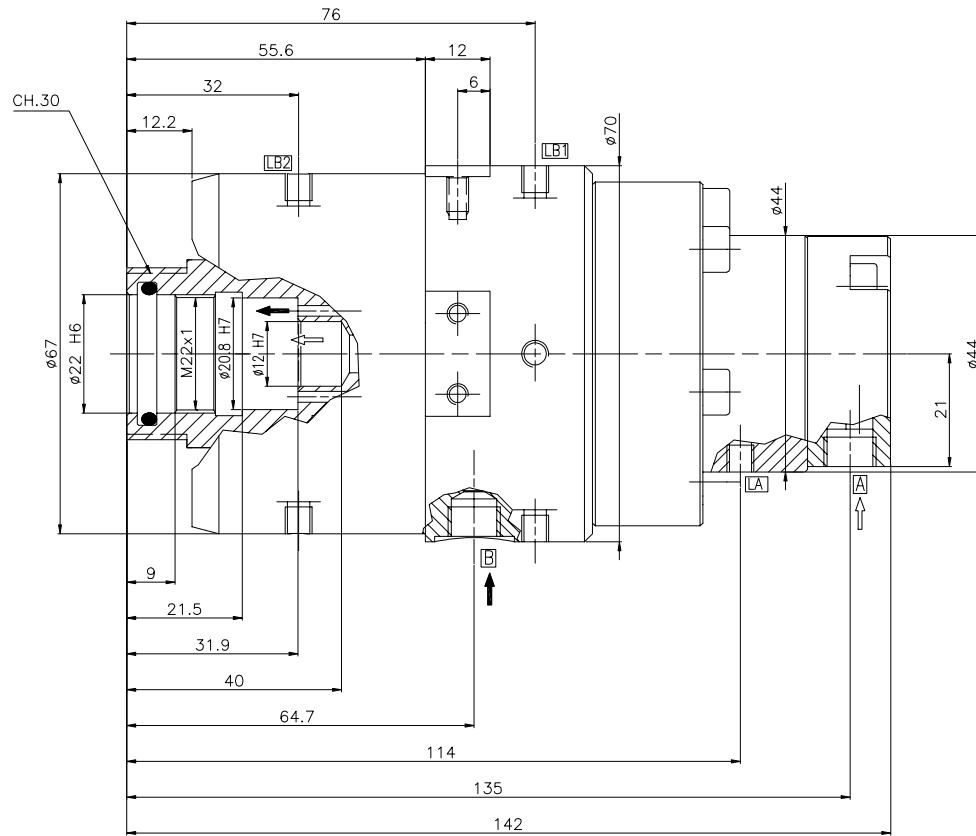


TABELLA CONNESSIONI / CONNECTIONS TAB

A	INGRESSO LINEA A LINE A INLET	G 1/8" UNI ISO 228/1
B	INGRESSO LINEA B LINE B INLET	G 1/8" UNI ISO 228/1
LA	DREN. LINEA A LINE A DRAIN	M5
LB1	DREN.1 LINEA B LINE B DRAIN 1	M5
LB2	DREN.2 LINEA B LINE B DRAIN 2	M5

OPERATING CONDITIONS

LINE	A	B
MEDIUM	AIR	IDRAULIC OIL
PRESS.	5 bar MAX	80 bar MAX
RPM	8000	
TEMPERATURE	70°C MAX	



© 2017 PROPERTY OF JOHNSON-FLUITEN SA THE DRAWING AND ITS INFORMATION ARE CONFIDENTIAL AND MUST BE RETURNED IF REQUESTED BY JOHNSON-FLUITEN SA.				
Permissible deviations on untoleranced machining dimensions as below		PATTERN NO:	REFERENCE DRAWING:	TREATMENT:
ISO 2768-m		ANGULAR TOLERANCE:	REQUEST NO:	MATERIAL:
Tolerance		± 0°30'	LOCATION: 243	N. AMERICA EUROPE ASIA S. AMERICA
mm	± mm	DEBURR:	DRAWN BY: Maccora-A CHECKED BY: L.Z. DATE: 21/06/2017	PROJECTION: 
Up to 6	0.1			
6-30	0.2			
30-120	0.3			
120-400	0.5			
400-1000	0.8		TITLE: ROTARY JOINT TYPE G-50356	
1000-2000	1.2		ARTICLE NO: G-50356-0000	
2000-4000	2		SCALE: 1:1 PAGE: OF: DRAWING NO: F50356	REV: 2

2	10/10/2017	AGGIORNATO DISEGNO DRAWING UPDATED	Maccora-A	L.M.
1	04/09/2017	AGGIORNATO SU RICHIESTA CLIENTE UPDATED ON CUSTOMER DEMAND	Maccora-A	L.M.
INDICE MODIFICHE	DATA	DESCRIZIONE	DISEGNATO	APPROVATO

**JOHNSON-FLUITEN**  
www.johnson-fluiten.com