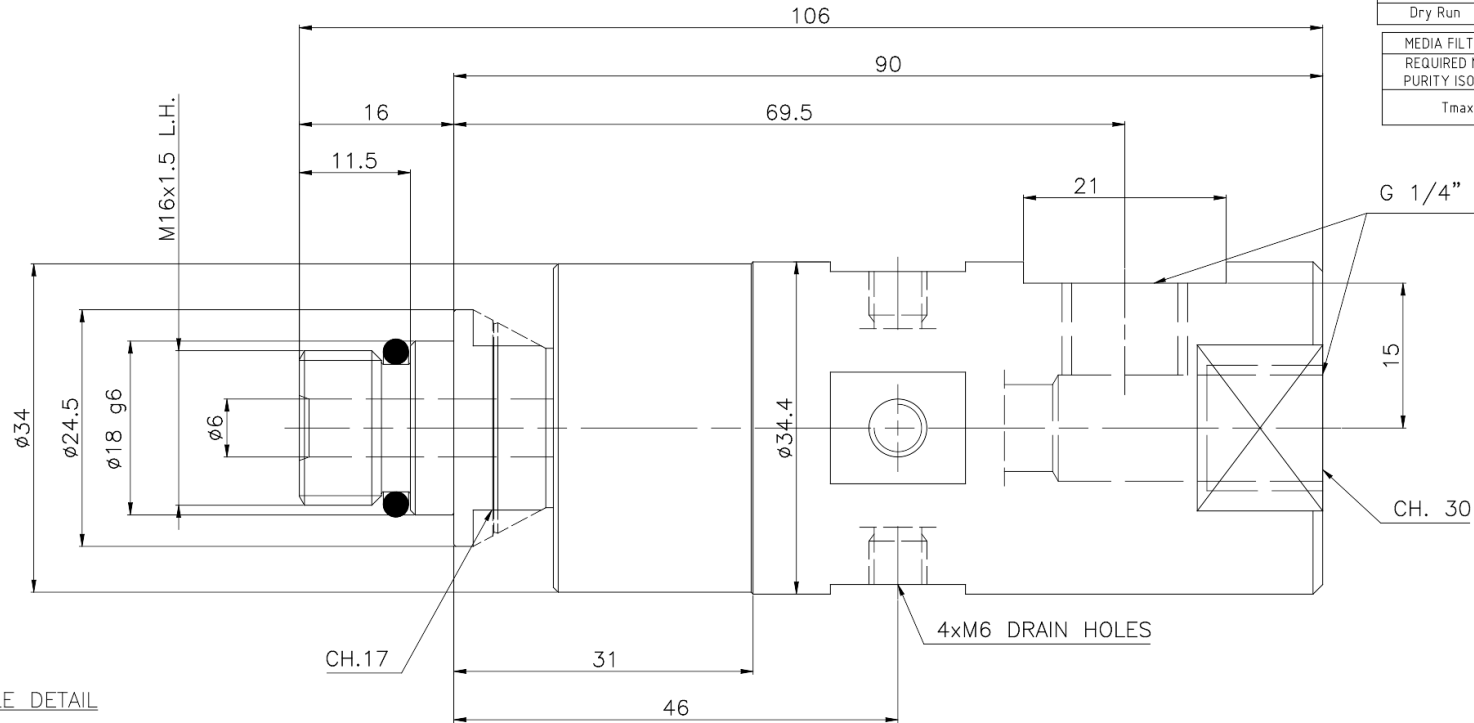


B	20/12/2022	AGGIORNATA TABELLA CONDIZIONI ESERCIZIO OPERATING CONDITIONS TAB UPDATED	Maccora-A	L.M.
A	27/05/2022	AGGIORNATO UPDATED	Maccora-A	L.M.
INDICE MODIFICHE	DATA	DESCRIZIONE	DISEGNATO	APPROVATO

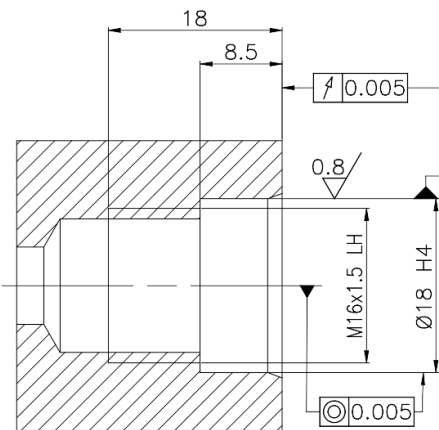
NOTE: MAX OPERATING VALUES ARE NOT ALLOWED AT THE SAME TIME

MEDIUM	max speed [r.p.m.]	max pressure [bar]
Coolant	15.000	100
Mql	15.000	10
Air	15.000	8
Dry Run	15.000	-

MEDIA FILTERING	≤50µm
REQUIRED MEDIA PURITY ISO 4406	17/15/12
Tmax	70°C



SPINDLE DETAIL



2	10/06/2022	AGGIORNATO DISEGNO DRAWING UPDATED	Maccora-A	L.M.
1	24/05/2022	AGGIUNTO PASSAGGIO ASSIALE AXIAL CONNECTION ADDED	Maccora-A	L.M.
INDICE MODIFICHE	DATA	DESCRIZIONE	DISEGNATO	APPROVATO

© 2022 PROPERTY OF JOHNSON-FLUITEN Srl THE DRAWING AND ITS INFORMATION ARE CONFIDENTIAL AND MUST BE RETURNED IF REQUESTED BY JOHNSON-FLUITEN Srl.						
Permissible deviations on untoleranced machining dimensions as below		PATTERN NO:	REFERENCE DRAWING:	TREATMENT:		
ISO 2768-m		ANGULAR TOLERANCE:	REQUEST NO:	MATERIAL:		
Tolerance		± 0°30'	LOCATION: 243	:N. AMERICA :EUROPE :ASIA :S. AMERICA		
mm	± mm	DEBURR:				
Up to 6	0.1					
6-30	0.2	DRAWN BY: Maccora-A	PROJECTION:	TITLE: ROTARY JOINT TYPE G-50551 M3SWB433Z12U31G		
30-120	0.3	CHECKED BY: L.M.				
120-400	0.5	DATE: 03/05/2022				
400-1000	0.8			ARTICLE NO: G-50551-0000		
1000-2000	1.2			SCALE: 2:1	PAGE: OF:	DRAWING NO: F50551
2000-4000	2					REV: 2B
		www.johnson-fluiten.com		V1.2		