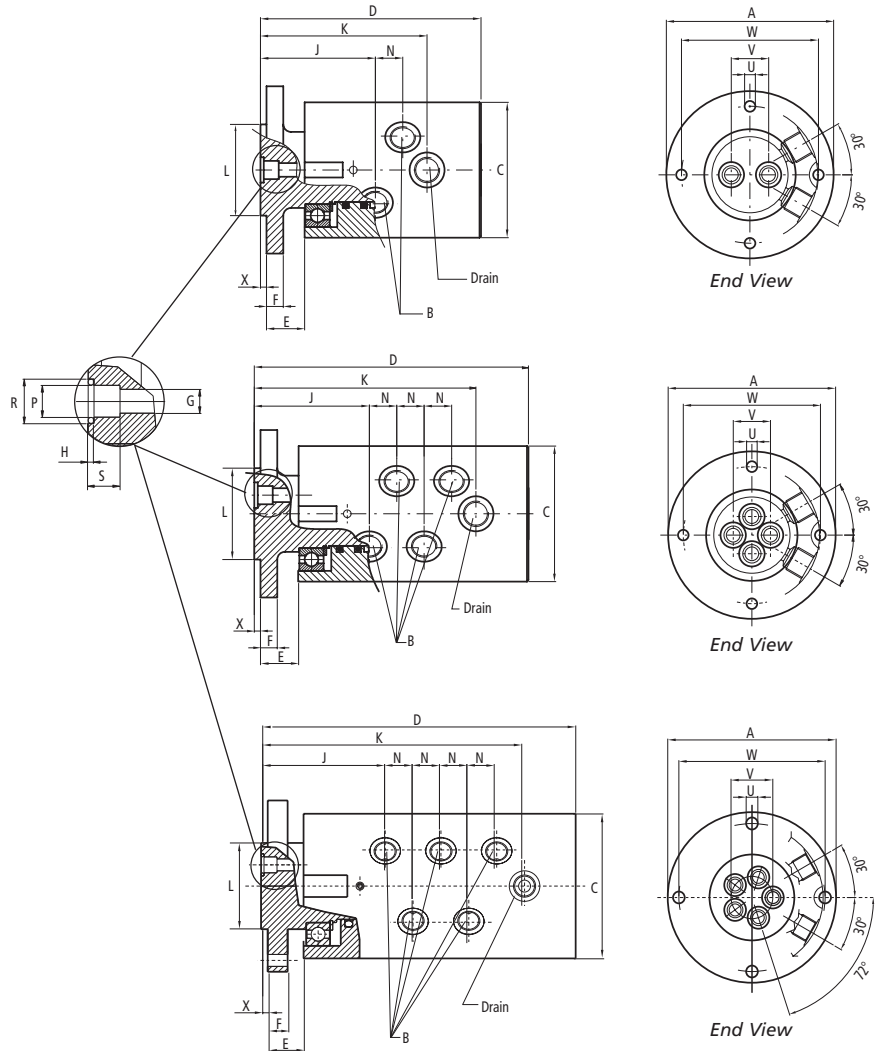


Multi-Passage Rotary Unions

INSTALLATION INSTRUCTIONS



Fluid	PSI (BAR)	Temperature °F (°C)	RPM
Air	145 (10)	194 (90)	100
Hydraulic Oil	870 (60)	194 (90)	100
	3,625 (250)	194 (90)	10



Type	A	B	C	D	E	F	G	H	J	K	L*	N	P	R	S	U	V	W	X
G2M009001494	110	3/8" BSP	89	145	25	11	9	2	76	110	60	18	12	17	12	7	25	90	4
G2M012002385	130	1/2" BSP	108	158	25	14	12	2	81	123	75	23	15	20	15	9	29	110	4
G4M009001454	110	3/8" BSP	89	180	25	11	9	2	76	146	60	18	12	17	12	7	25	90	4
G4M012003608	130	1/2" BSP	108	202	25	14	12	2	81	169	75	23	15	20	15	9	29	110	4
G5M009015044	129	3/8" BSP	109	237	27	15	9	2	94	199	65	21	12	17	12	9	32	112	5

Inter-passage leakage may occur, check compatibility different fluids. *L tolerance = h6

Dimensions in millimeters. For reference only and subject to change.

Overview

- Multi-passage rotary unions for air and oil
- Precision ball bearings are lubricated for life
- Proprietary "slide" seal provides long life and dry-running
- Heat-treated (hardened) stainless steel rotor
- Drain holes can be connected to a drain line
- Designed for multi-station index tables